

Distributed by:

Lab Unlimited
CARL STUART GROUP

Tallaght Business Park
Whitestown, Dublin 24,
Ireland
D24 RFK3

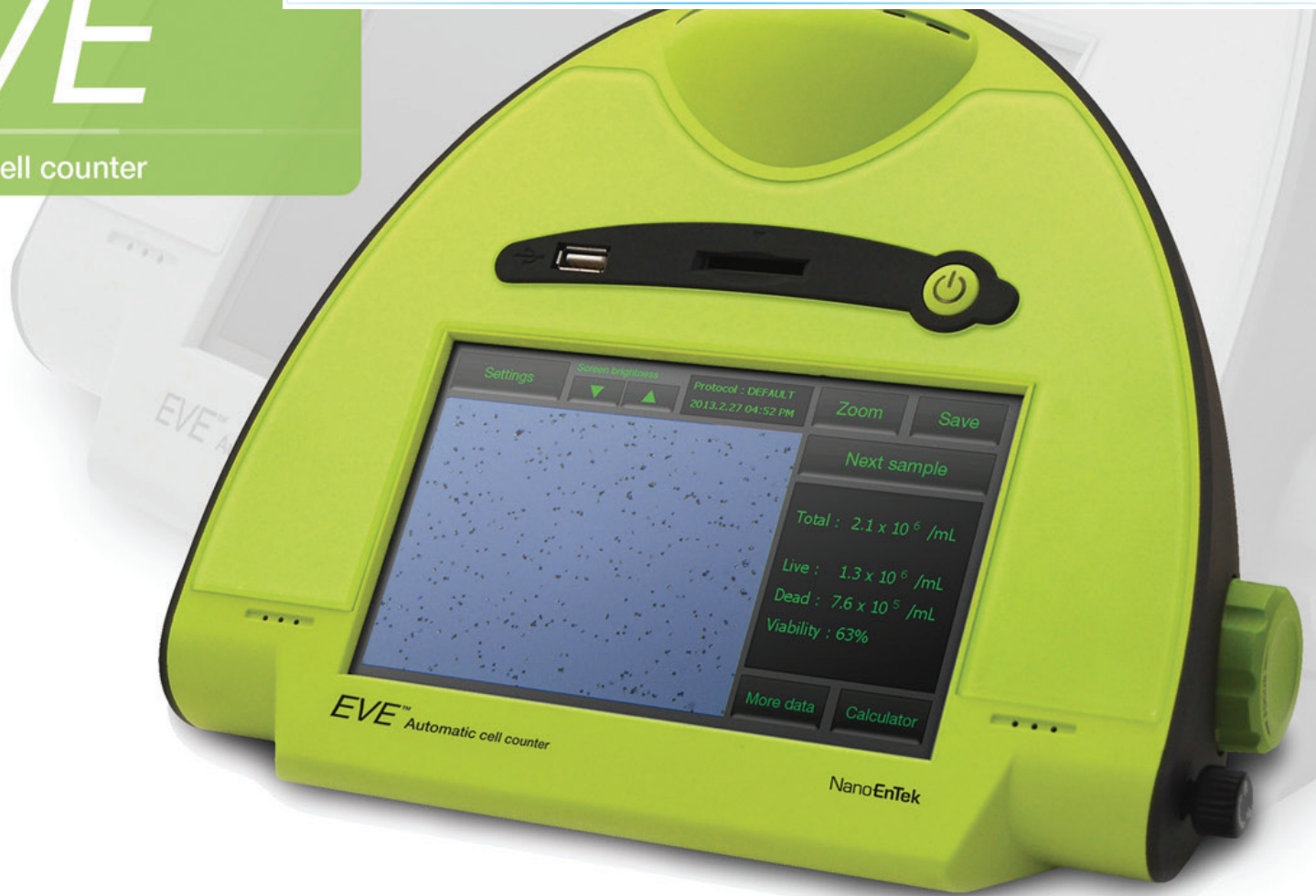
Tel: (01) 4523432
Fax: (01) 4523967
E-mail: info@labunlimited.com
Web: www.labunlimited.com

Quatro House, Frimley Road,
Camberley,
United Kingdom
GU16 7ER

Tel: 08452 30 40 30
Fax: 08452 30 50 30
E-mail: info@labunlimited.co.uk
Web: www.labunlimited.co.uk

EVE™

Automatic cell counter



Counting with *EVE*, affordable automatic cell counting

Benchttop automatic cell counter, *EVE*!
No more manual counting!

Nano**En**Tek

EVE™

Automatic cell counter, with states-of-the-art optics provides image analysis for cell counting. The EVE™ is a benchtop size counter, designed to measure live, dead, and total counting, which gives us capability for viability with accuracy and precision.

Key features and benefits

Fine distinction of clumped cell

An advanced analysis algorithm provides accurate results in clumped cell

Applicable for broad range of cell sizes and types

From Primary (tissue, blood) cell lines to stem cells

User friendly

7 inch LCD touch screen Benchtop size No maintenance needed

Data storage and analysis

Stores 500 test results, transfers the data to PC using USB drive Provided PC software will give you more in-depth analysis

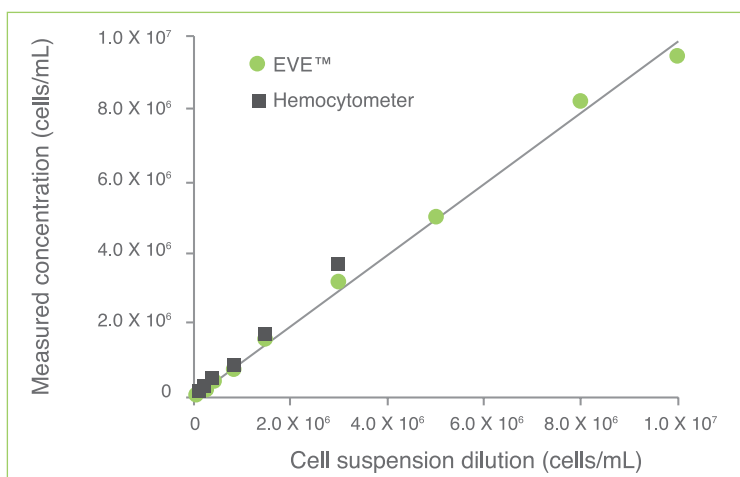
Cell size gating function

Select range of cell size

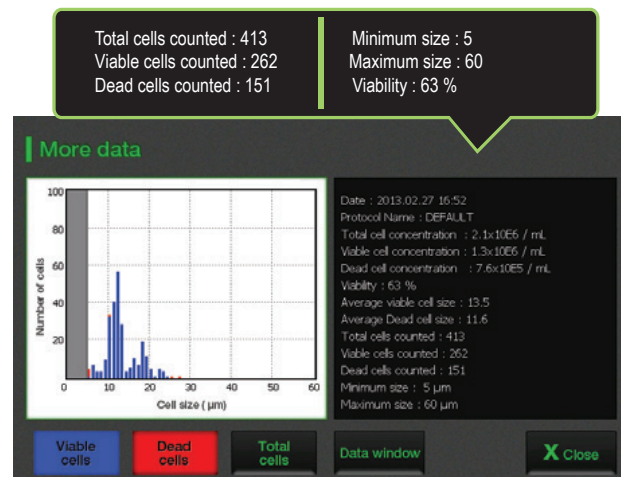
Convenient for use



Correlation of EVE™ and manual counting



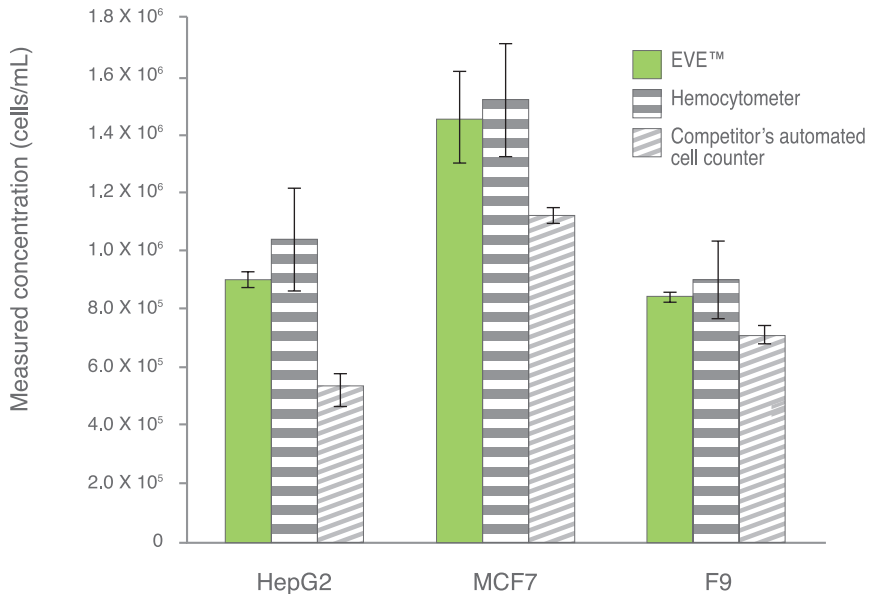
Measuring from the EVE™ extend further the high concentration range than hemocytometer readings



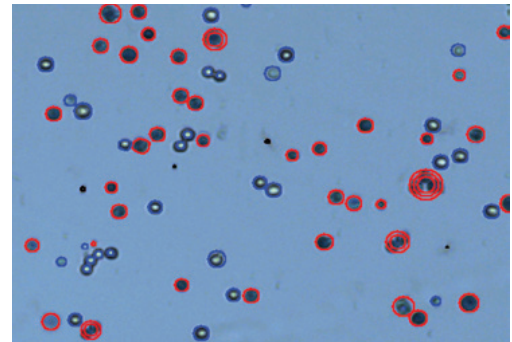
More data window to check the detail result and select the cell size gating

Faster ! Accurate ! Easy to use !

o Total cell counting result (Clumped cell)



The MCF7 breast cancer cell line can be clumpy. The EVE™ counting algorithm identifies and counts individual cells within these cell clumps for accurate analysis.



Clumped cells (HepG2, MCF7, F9) were counted with EVE™, a hemocytometer and the competitor's automated cell counter. In accuracy and precision, EVE™ is comparable to the hemocytometer for all cell lines. The competitor's cell counter was shown significantly less numbers in clumped cell. Cell counting results were obtained seven times repetition.

o Cell lines validated on EVE™

Cell Type	Animal	Organ	Growth Properties
HeLa	Human	Skin	Adherent
NIH-3T3	Mouse	Embryo	Adherent
U-2 OS	Human	Bone	Adherent
Jurkat	Human	Blood	Suspension
KG-1	Human	Blood	Suspension
HepG2	Human	Liver	Adherent
Hep3B	Human	Liver	Adherent
LNCaP	Human	Prostate	Adherent
SH-SY5Y	Human	Brain	Adherent
SCN2.2	Rat	Brain	Adherent
F9	Mouse	Embryo	Adherent
MCF7	Human	Breast	Adherent
A549	Human	Lung	Adherent
GH3	Rat	Pituitary gland	Adherent

o Specifications

Item	Description
Counting time	< 20 seconds
Cell measurement range (cells/mL)	1 x 10 ⁴ - 1 x 10 ⁷
Optimal measurement range (cells/mL)	1 x 10 ⁵ - 4 x 10 ⁶
Cell size range	5 - 60
Sample volume	10 L
Staining Method	Trypan blue stain
Display	7" LCD touch screen
Exporter formats	JPEG (image), CSV(raw data)
Data export	USB drive
Dimensions	27 cm (w) x 20 cm(d) x 19 cm(h)
Weight	2.1 kg (4.6 lb)

o Ordering information

Cat. No.	Description	Contents
EVE-MC	EVE™ Automatic cell counter	Main device, Power supply, USB drive, EVE™ Cell counting slide (50slides)
EVS-050	EVE™ Cell counting slide	50 slides (100 counts)
EVS-1000	EVE™ Cell counting slide	1,000 slides (2,000 counts)
EVS-5000	EVE™ Cell counting slide	5,000 slides (10,000 counts)
EBB-001	Test beads Concentration (avg.) 1.0 x 10 ⁸	1 mL

EVE™

NanoEnTek

Distributed by:

Lab Unlimited
CARL STUART GROUP

Tallaght Business Park
Whitestown, Dublin 24,
Ireland
D24 RFK3

Tel: (01) 4523432
Fax: (01) 4523967
E-mail: info@labunlimited.com
Web: www.labunlimited.com

Quatro House, Frimley Road,
Camberley,
United Kingdom
GU16 7ER

Tel: 08452 30 40 30
Fax: 08452 30 50 30
E-mail: info@labunlimited.co.uk
Web: www.labunlimited.co.uk